

GENERAL EDUCATION AND UNIVERSITY REQUIREMENTS

GENERAL EDUCATION INFORMATION AND REQUIREMENTS

Testing and Placement

Incoming freshmen and transfer students may be placed in specific GE Foundations, Developmental or ESL courses as a result of testing and/or multiple measures placement prior to registration. Students may be exempt from testing due to SAT/ACT scores or prior college work.

Prerequisites and Equivalencies for GE Foundations Courses

GE 1000/GE 3000 is a University Graduation Requirement

GE 1000

Required of all freshmen & transfers entering with 0-29 credits

Prereq: None

Equiv: ID 1001

GE 3000

Required of transfers entering with 30 credits or more

Prereq: 30 credits and ENG 1030

ENG 1030

Prereq: Placement testing or exemption from placement testing

ENG 1025 if required by placement testing

Equiv: ENG 1031/1032, ENG 1033/1034, ENG 1430 (ESL version), ENG 1620 (Honors version), ENG 1020, ENG 1400

MATH 1000 or MATH 1044*

Prereq: MATH 0901 if required by placement testing

*MATH 1044 is available as a Foundation option for CBPM students only

Equiv of MATH 1000: MATH 1001/1002, MATH 1003/1004, MATH 1051

MATH 1010 or 1016 or 1030

Prereq: MATH 0901 if required by placement testing

Co-requisite: Math 0902 (only required, with advisement, based on placement test score and intended major)

MATH 1054

Prereq: MATH 0901 if required by placement testing and MATH 1000

COMM 1402

Prereq: CS 0412 if required by placement testing

ENG 1025 if required by placement testing

May be taken concurrently with ENG 1030

Equiv: COMM 1400

GE 2021- 2026 Research and Technology is offered as college-based course

GE 2021 College of BPM

GE 2022 College of EDU

GE 2023 All College of CLA

GE 2024 College of NAHS & NJCSTM & NWGC (Speech Language and Hearing Science majors)

GE 2025 SFPA & Michael Graves College

GE 2026 Undecided Majors and other special populations

Prereqs: CS 0412 if required by placement testing; ENG 1030 or equivalent course

Equiv: GE 2020

GE Distribution Courses

Approved GE Distribution Courses

All courses taken under the General Education Disciplinary/Interdisciplinary Distribution requirements must be selected from the Approved General Education Distribution Course List. These courses are designated as GEHU, GESS, and GESM.

GEHU Humanities

GESS Social Sciences

GESM Science and Mathematics

Required GE Distribution Courses

ENG 2403 is a required Humanities Distribution course with an emphasis on diversity.

Prereq: CS 0412 if required by placement testing; ENG 1030 or equivalent

Equiv: ENG*2203

HIST 1062 is a required Social Sciences Distribution course.

Prereq: None

Foreign Language Credit

The three credits for a foreign language that may satisfy the GE Disciplinary/Interdisciplinary Distribution Requirement are awarded only upon successful completion of the second of two semesters of study at the introductory or intermediate level.

Credit for the first semester may be used as elective credit.

UNIVERSITY REQUIREMENTS

GE 1000/3000 Requirement

All undergraduate students must satisfy this University requirement for graduation by successfully completing one of the following courses at Kean University: GE 1000 Transition to Kean (all freshmen and transfers entering with 0-29 credits) or GE 3000 Transfer Transitions (transfers entering with 30 credits or more).

Writing-Emphasis Requirement

All students are required to complete one "Writing- Emphasis" course. The "W-E" course must be within the major portion of your program. Consult your major program advisor for specific information.

Note: Equivalent courses may be prior General Education or prerequisite course work taken by students that is now discontinued.

(28700) B.S. Information Technology

⁴ Students eligible to take MATH 1054 based on their placement test may take that course in place of MATH 1000 (In this case, MATH 1054 will fulfill GE Foundation Requirements and the student may take an additional 3 credits in Free Electives to total 120 S.H.).

⁵ Students who have had prior programming experience may enter CPS 2231 directly with approval of the Departmental Advisory Committee (In this case, CPS 2231 will fulfill GE Science and Mathematics Distribution and the student may take another 4 credits in Major Electives to total 120 S.H.).

⁶ Select 4 TECH Elective courses with department advisement, at the 3xxx level or higher. (1 CPS Elective course may be selected, with faculty permission).

⁷ Optional Freshman Research Course

Students can take 1 credit which may fulfill Free Electives requirements with approval of the Departmental Advisory Committee. TECH 1996 Research Initiative for Freshmen is recommended to be taken in the second semester of the freshman year. TECH 1996, CPS 2010 are courses acceptable for use in Free Electives and are managed by the School of Computer Science and Technology.

⁸ Optional Internship Course

Students can take a maximum of 6 credits for TECH 3291/92/93 Career Internship in IT which are internship courses acceptable for use in Free Electives managed by Career Services. Students interested should contact Career Services.

Additional Required Courses Prerequisites (Pre/corequisites may change, consult KeanWise)

Course	Prerequisite
COMM 3590 Business and Professional Communication	COMM 1402
ENG 3091 Technical Writing	ENG 1030
MGS 2030 Principles of Management	COMM 1402 and GE 202x
MATH 1054 Precalculus	MATH 1000
MATH 2110 Discrete Structures	MATH 1054
MATH 2526 Applied Statistics I	MATH 1054

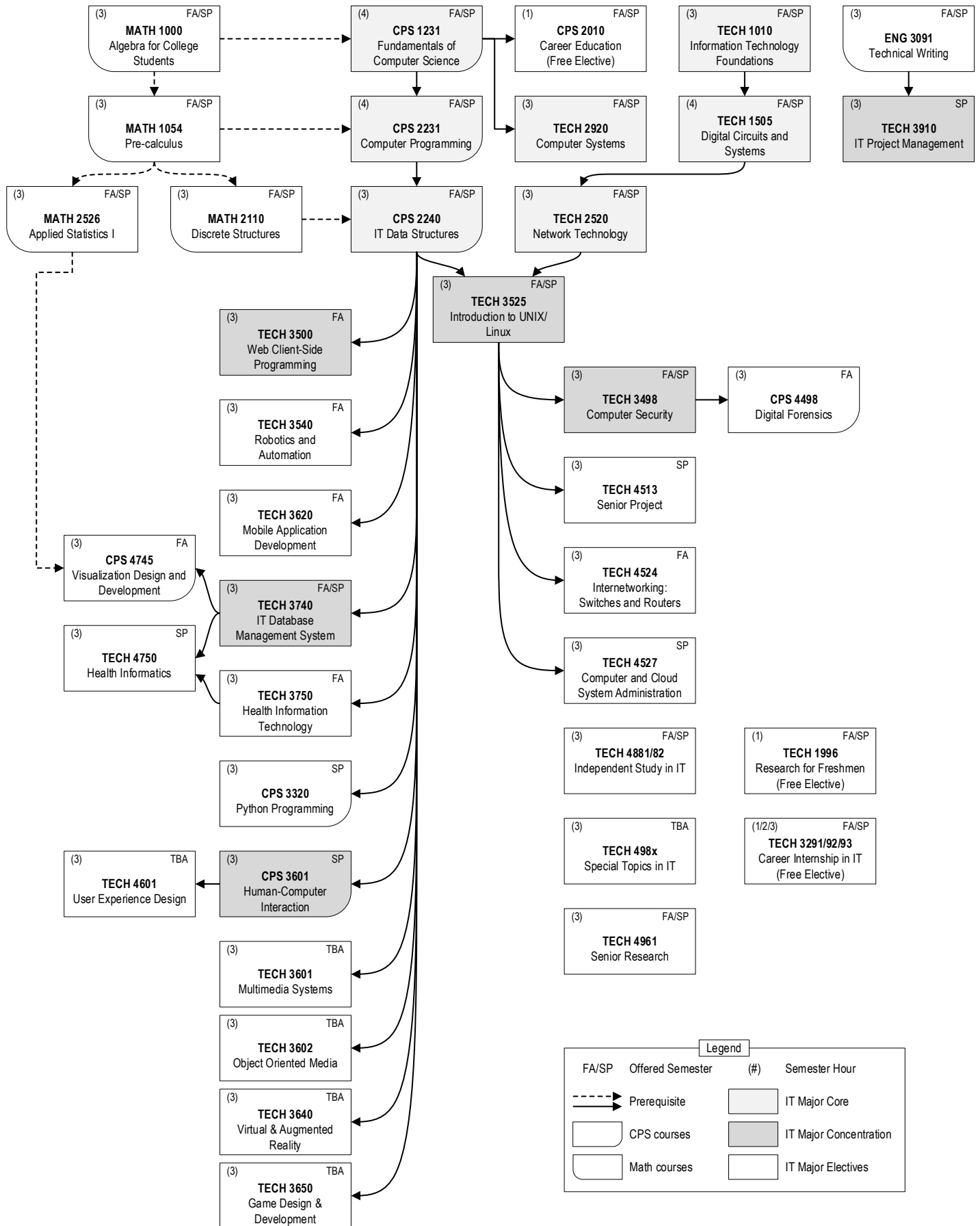
REQUIREMENTS FOR DECLARATION TO THE MAJOR

The School of Computer Science and Technology has adopted the following standards for declaration to all options of the Information Technology major:

- a) Minimum cumulative GPA of 2.5 at the time of declaration to the major.
- b) Completion of at least 13 credits of CPS and TECH Major courses at Kean University with grade of C or higher in each.

Your major department is located in Green Lane Academic Building (GLAB), Room 228, Tel: 908-737-4700.

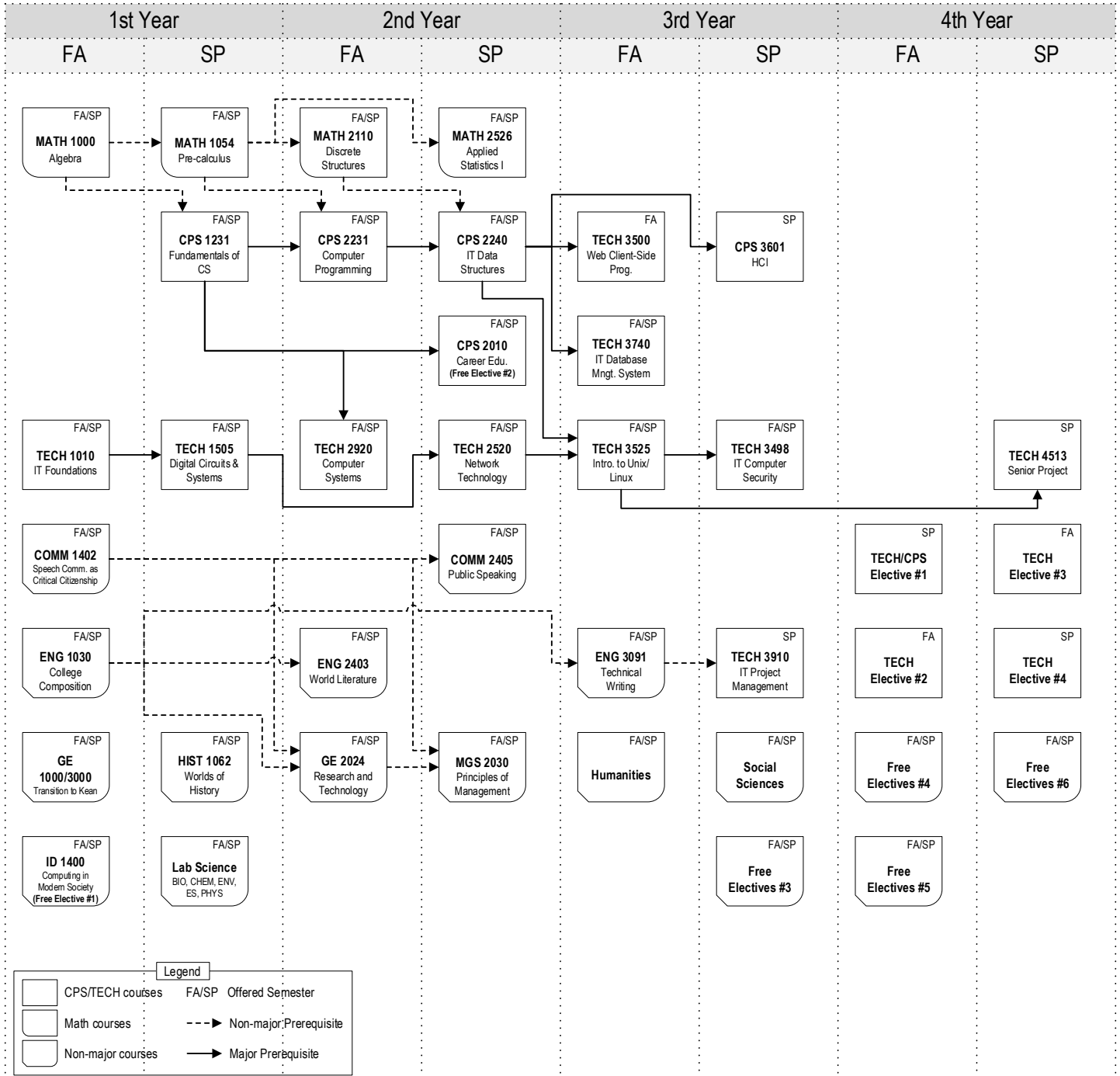
(28700) B.S. in Information Technology: Prerequisite Flow Chart



Information Technology (TECH) Course List

Course #	S.H.	Course Title	FA	SP	Prerequisites
TECH 1010	3	IT Foundations	*	*	None
TECH 1505	4	Digital Circuits and Systems	*	*	TECH 1010
TECH 2520	3	Network Technology	*	*	TECH 1505
TECH 2920	3	Computer Systems	*	*	CPS 1231
TECH 3498	3	IT Computer Security	*	*	TECH 3525
TECH 3500	3	Web Client-Side Programming	*		CPS 2240
TECH 3525	3	Introduction to UNIX/Linux	*	*	CPS 2240 and TECH 2520
TECH 3540	3	Robotics and Automation	*		CPS 2232 or CPS 2240
TECH 3601	3	Multimedia Systems		TBA	CPS 2240
TECH 3602	3	Object Oriented Media	TBA		CPS 2240
TECH 3620	3	Mobile Application Development	*		CPS 2232 or CPS 2240
TECH 3640	3	Virtual & Augmented Reality	TBA		CPS 2240
TECH 3650	3	Game Design and Development		TBA	CPS 2240
TECH 3740	3	IT Database Management Systems	*	*	CPS 2240
TECH 3750	3	Health Information Technology	*		CPS 2232 or CPS 2240
TECH 3910	3	IT Project Management		*	ENG 3091
TECH 4513	3	Senior Project		*	TECH 3525; To be taken final spring semester
TECH 4524	3	Internetworking: Switches and Routers	*		TECH 3525
TECH 4527	3	Computer and Cloud System Administration		*	TECH 3525
TECH 4601	3	User Experience Design	TBA		CPS 3601
TECH 4750	3	Health Informatics		*	TECH 3750 and TECH 3740
TECH 4881/82	3	Independent Study in IT	*	*	Faculty permission
TECH 4961	3	Senior Research	*	*	Prior research experience required; Faculty permission
TECH 498x	3	Special Topics in IT			Faculty permission; Topics vary
Computer Science Courses					
CPS 1231	4	Fundamentals of Computer Science	*	*	MATH 1000
CPS 2231	4	Computer Programming	*	*	CPS 1231 and MATH 1054
CPS 2240	3	IT Data Structures	*	*	CPS 2231 and MATH 2110; IT majors only
CPS 3320	3	Python Programming		*	CPS 2232 or CPS 2240
CPS 3601	3	Human Computer Interaction		*	CPS 2232 or CPS 2240
CPS 4498	3	Digital Forensics	*		TECH 3498
CPS 4745	3	Visualization Design and Development	*		(CPS 3740 or TECH 3740) and MATH 2526
Cooperative Education Program for IT					
CPS 2010	1	Career Education	*	*	CPS 1231; Fulfills Free Electives
TECH 3010	0	Cooperative Education I	*	*	TECH 2010; For full-time co-op program students only
TECH 3011	0	Cooperative Education II	*	*	TECH 2010; For full-time co-op program students only
TECH 4010	0	Cooperative Education Practicum	*	*	TECH 3010; For full-time co-op program students only
Freshman Research and Internship for IT					
TECH 1996	1	Research Initiative for Freshman	*	*	Faculty permission; Fulfills Free Electives
TECH 3291-93	1-3	Career Internship in IT	*	*	Faculty permission; Fulfills Free Electives

(28700) B.S. in Information Technology: Recommended Sequence



1st Year		2nd Year		3rd Year		4th Year	
Fall	Spring	Fall	Spring	Fall	Spring	Fall	Spring
MATH 1000	MATH 1054	MATH 2110	MATH 2526	TECH 3500	CPS 3601	TECH Elec. #1	TECH 4513
TECH 1010	CPS 1231	CPS 2231	CPS 2240	TECH 3740	TECH 3498	TECH Elec. #2	TECH Elec. #3
COMM 1402	TECH 1505	TECH 2920	TECH 2520	TECH 3525	TECH 3910	Free Elec. #4	TECH Elec. #4
ENG 1030	HIST 1062	ENG 2403	COMM 2405	ENG 3091	Social Sciences	Free Elec. #5	Free Elec. #6
GE 1000/3000	Lab Science	GE 2024	MGS 2030	Humanities	Free Elec. #3		
ID 1400 - Free Elec. #1			CPS 2010 - Free Elec. #2				

(28700) B.S. in Information Technology: 4-year Study Plan

This first-year study plan is for new students only. All new students should see their CS/IT faculty advisor (in Oct) to review and update their 4-year study plans before the early registration period (in Nov). **Students should pay attention to each course's prerequisites and the offered semester (CourseID CourseName (credits) (semester offered))**. Please check the academic guide sheets at <http://yoda.kean.edu/studyplans/>

Name:	Faculty Advisor:
Kean Id#	Catalog Year:

Notes: (Tip) Modify this template by typing the year, moving courses around, adding rows, etc. and make your personalized study plan.

1st Year Fall (16)	1st Year Spring (18)
MATH 1000 Algebra (3)	MATH 1054 Pre-calculus (3)
TECH 1010 IT Foundations (3) (FA/SP)	CPS 1231 Fundamentals of CS (4) (FA/SP)
COMM 1402 Speech Communication (3)	TECH 1505 Digital Circuits and Systems (4) (FA/SP)
ENG 1030 College Composition (3)	HIST 1062 Worlds of History (3)
GE 1000/3000 Transition to Kean (1)	Lab Science (4)
ID 1400 Comp. in Modern Society (3) - Free Elective #1	

Internship, summer course, or summer research

2nd Year Fall (16)	2nd Year Spring (16)
MATH 2110 Discrete Structures (3)	MATH 2526 Applied Statistics (3)
CPS 2231 Computer Programming (4) (FA/SP)	CPS 2240 IT Data Structures (3) (FA/SP)
TECH 2920 Computer Systems (3) (FA/SP)	TECH 2520 Network Technology (3) (FA/SP)
ENG 2403 World Literature (3)	COMM 3590 Business and Professional Communication (3)
GE 2024 Research and Technology (3)	MGS 2030 Principles of Management (3)
	CPS 2010 Career Education (1) - Free Elective #2

Internship, summer course, or summer research

3rd Year Fall (15)	3rd Year Spring (15)
TECH 3500 Web Client-Side Programming (3) (FA)	CPS 3601 Human Computer Interaction (3) (SP)
TECH 3740 IT Database Management Systems (3) (FA/SP)	TECH 3498 IT Computer Security (3) (FA/SP)
TECH 3525 Intro. to Unix/Linux (3) (FA/SP)	TECH 3910 IT Project Management (3) (SP)
ENG 3091 Technical Writing (3)	Social Science (3)
Humanities (3)	Free Elective (3) #3

Internship, summer course, or summer research

4th Year Fall (12)	4th Year Spring (12)
TECH Major Elective (3) #1	TECH 4513 Senior Project (3) (SP)
TECH Major Elective (3) #2	TECH Major Elective (3) #3
Free Elective 3000/4000 (3) #4	TECH/CPS Major Elective (3) #4
Free Elective 3000/4000 (3) #5	Free Elective 3000/4000 (3) #6

Internship, summer course, or summer research

Fall offered TECH Major Electives	Spring offered TECH Major Electives
TECH 3540 Robotics & Automation (3) (FA)	TECH 4527 Computer & Cloud System Admin. (3) (SP)
TECH 3620 Mobile App. Development (3) (FA)	TECH 4750 Health Informatics (3) (SP)
TECH 3750 Health IT (3) (FA)	CPS 3320 Python Programming (3) (SP)
TECH 4524 Internetworking: Switches & Routers (3) (FA)	
CPS 4498 Digital Forensics (3) (FA)	
CPS 4745 Visualization Design & Development (3) (FA)	
TECH 4601 User Experience Design (3) (TBA)	